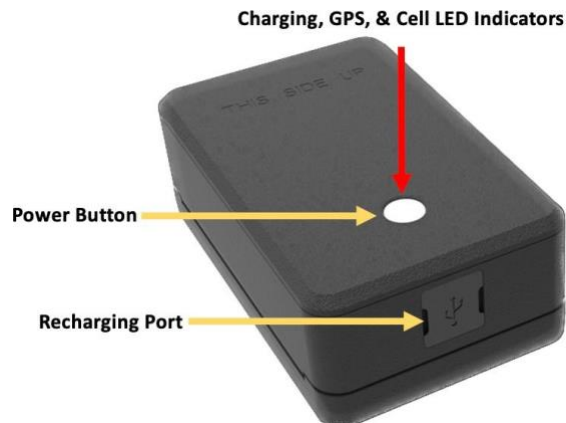


## Rechargeable Battery User Guide

The Rechargeable device is a rechargeable 2600 mAh battery. ***The device is shipped with approximately 35% charge due to lithium battery shipping restrictions.*** The device has three LED lights on the top of the device to indicate the status for each of the following:

- Battery Charging Status (Red)
- GPS (Green)
- Cell (Blue)



Length 3.13 inches, Width 1.97 inches, Height 0.91 inches

**Power Button:** Pressing the Power Button down for five seconds turns the device on. Once on, the power button will not power off the device.

**Charging:** This device can be charged using a standard 5V power supply/charger and USB Type-C Cable. It will charge in both powered-on and off modes. The Power LED will blink red while charging and change to a solid red LED once fully charged. The maximum time to be fully charged is roughly 3 hours.

**Installation:** The device should be installed in your vehicle in an inconspicuous location, such as under the seat, glove compartment, trunk, etc.

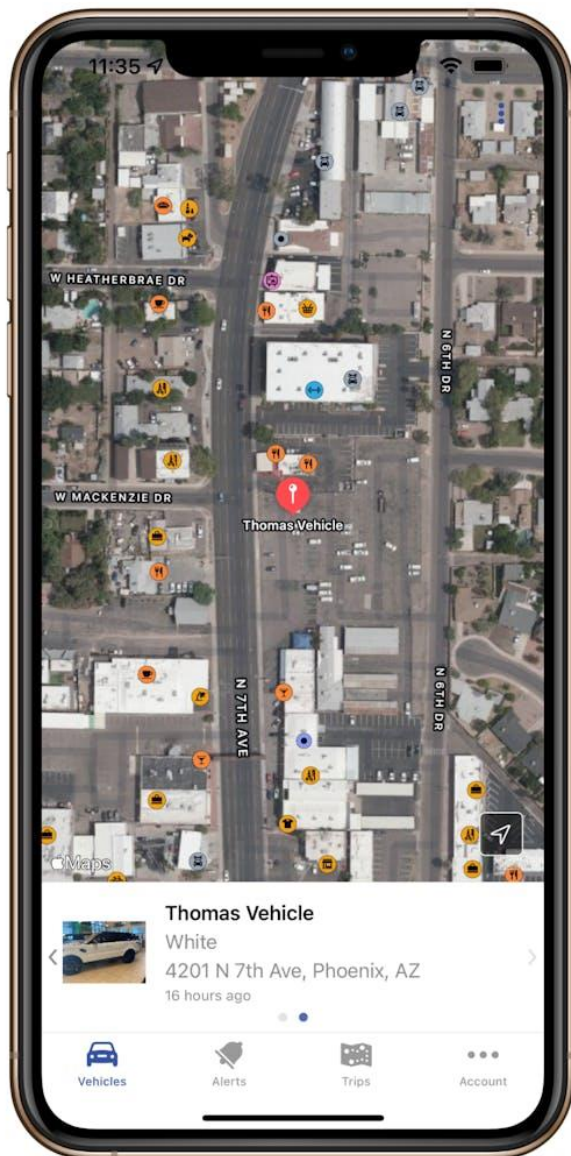
# Consumer Mobile App User Guide

## Vehicle View

Provides a map view with a pin drop showing the last location of your vehicle.

If you have multiple vehicles with a device, swipe left or right on the vehicle information section at the bottom of the screen to switch vehicles.

To request an updated location, click the red pin drop showing the vehicle location.

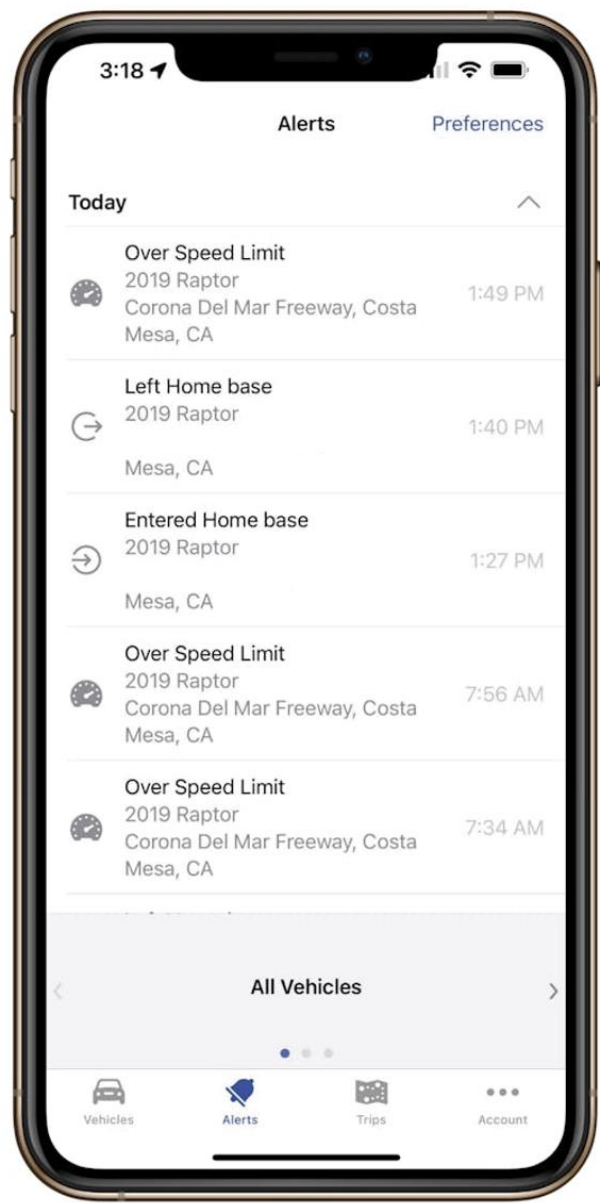


Alerts View

The Alerts icon shows all alerts for the selected vehicle. Alerts include Speeding, Geofence Entry/Exit, and Low Battery.

To see the location of an alert, click the alert event.

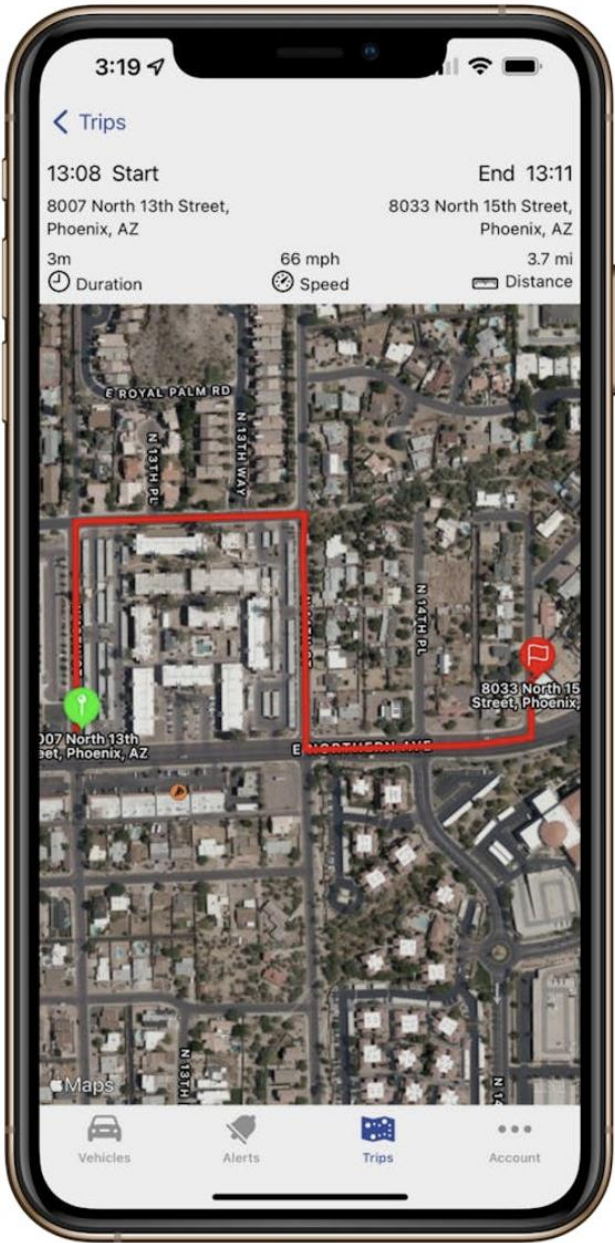
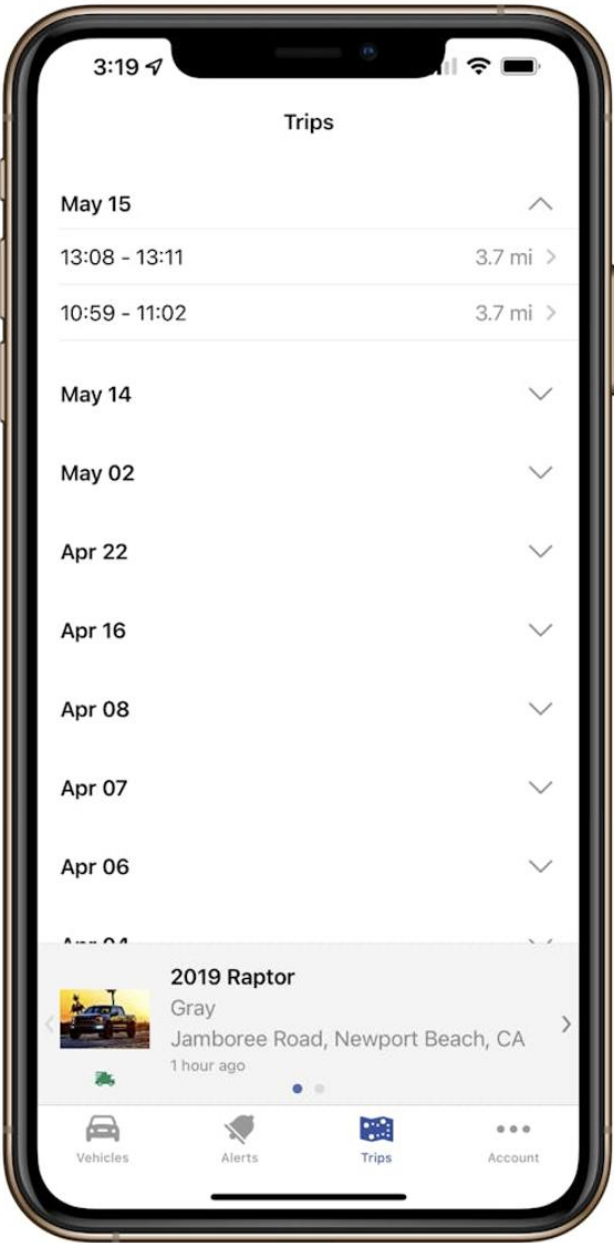
Users can turn on/off alerts as well as adjust the thresholds for triggering alerts in the Account Alert Preferences section.



Trips View

The Trips icon provides the ability to view trip history details, including duration, total distance driven, top speed, and route driven, which are overlaid on the map.

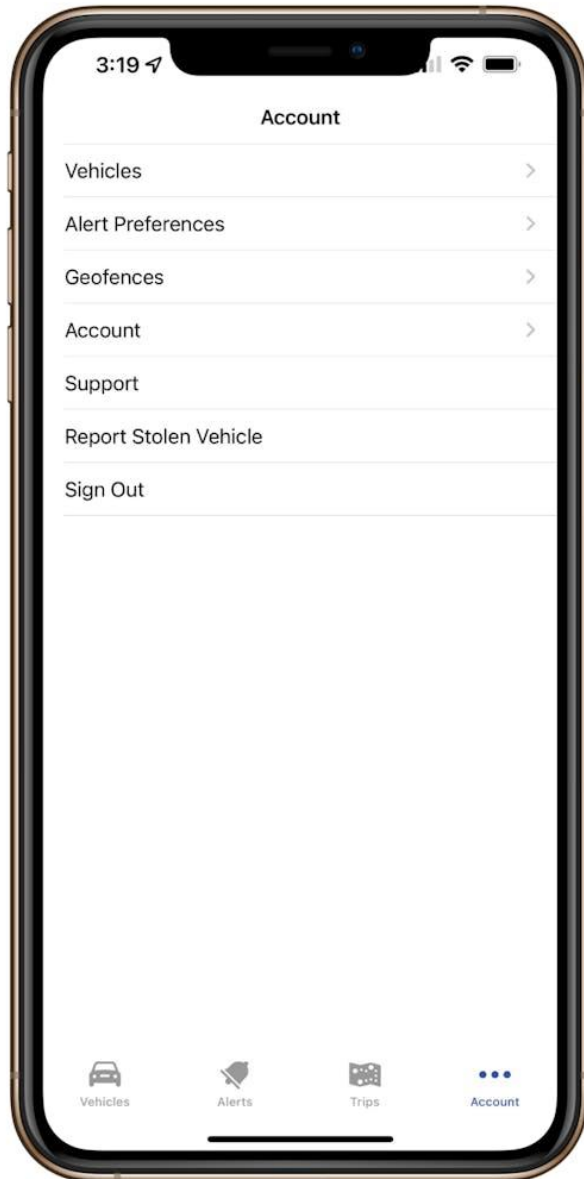
Trip history is displayed in a list with each day's trips collapsed. Click the day you're interested in viewing to expand the trips for that day. You can view the details for any given trip by clicking it.



## Account (Settings)

Provides the ability to:

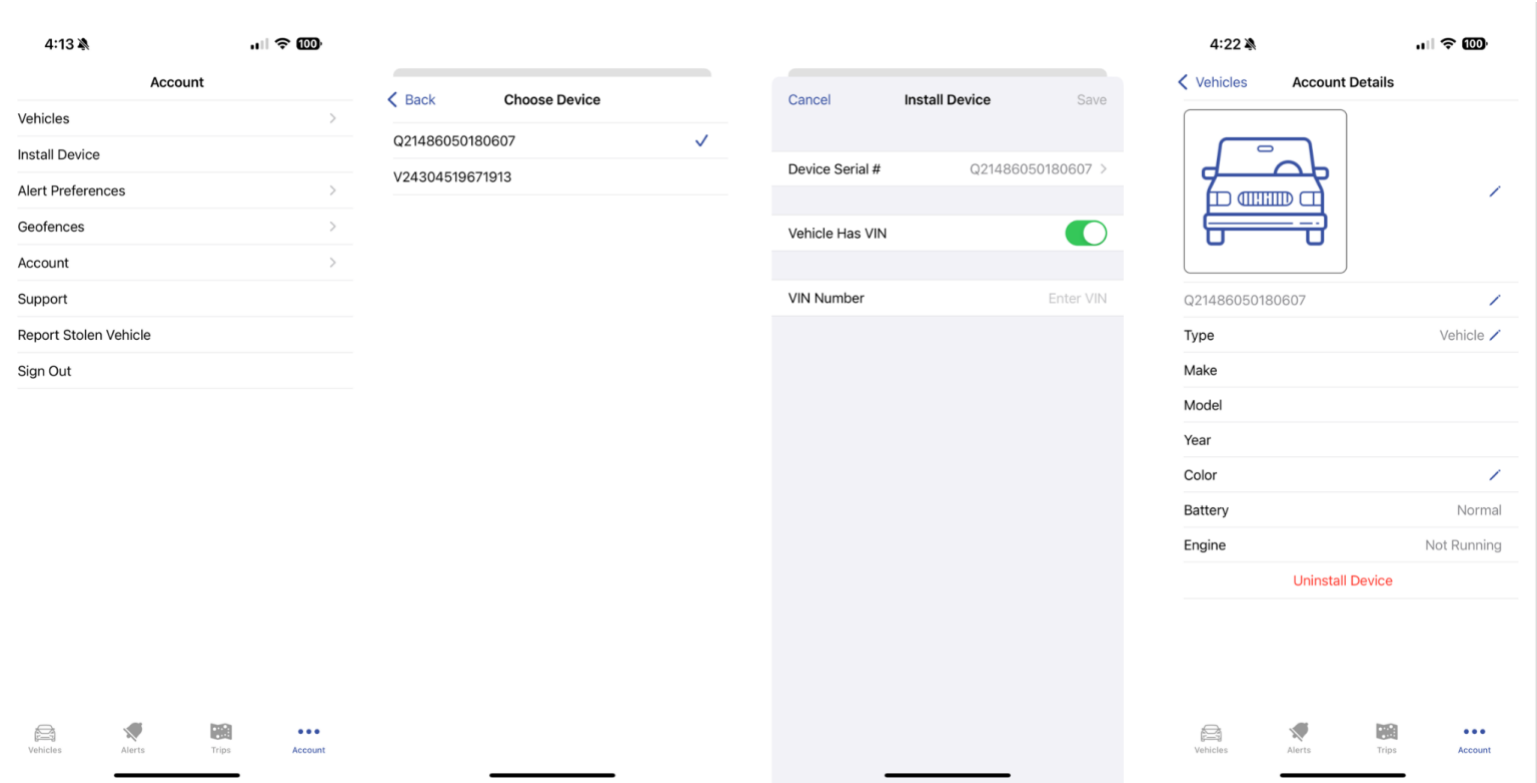
- View or edit your vehicle details
- Install Device
- Set up or view existing Alert Preferences
- Set up or view existing Geofences
- View or edit your account details
- Contact Support
- Report a Stolen Vehicle
- Sign Out of the App



## Install Device (pair a device to a vehicle or asset)

Devices powered on but not yet paired/associated with a vehicle or asset will show in the consumer app, including the location and trip history. To be able to edit the vehicle details, you will need to install the device via the mobile app. To do so, click:

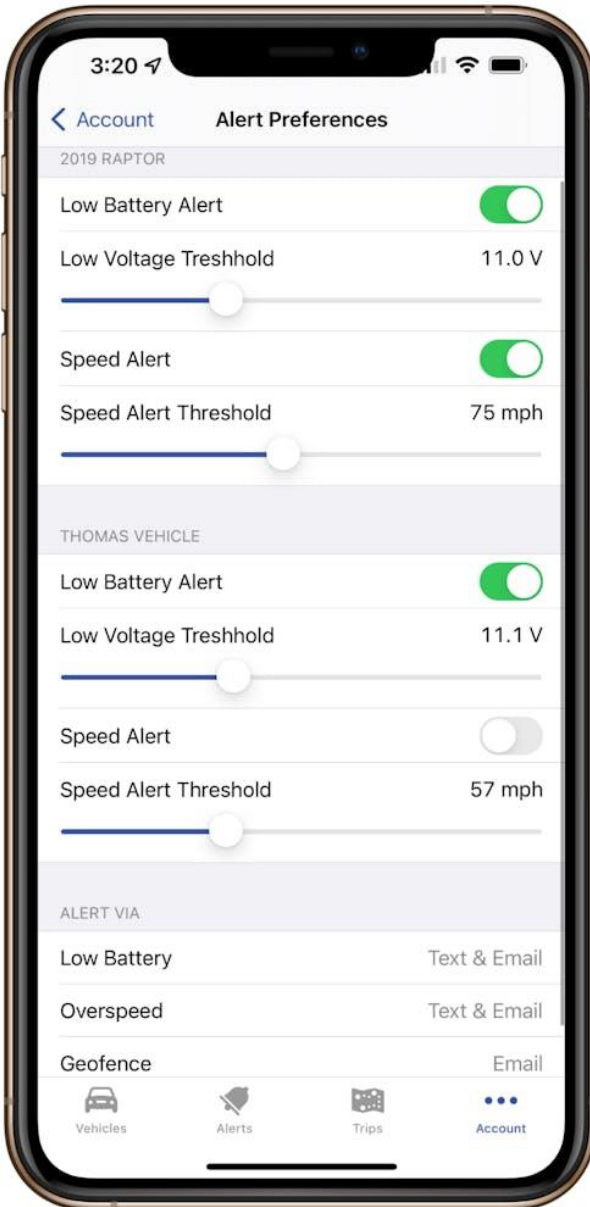
- Account > Install Device > Click the Device Serial Number and select the device you want to install.
  - If the asset is a vehicle with a standard 17-digit VIN, enter the VIN > and click Save.
  - If the asset has no standard 17-digit VIN, toggle the Vehicle Has VIN to off > click Save.
  - After saving the installation, you can edit the vehicle image, Name, Type, and Color.
  - To change the vehicle/asset the device is assigned to:
    - Click Uninstall
    - The device can then be re-installed to a different vehicle/asset by following the steps in the beginning of this section.



## Alert Preferences

Provides you the ability to:

- Set up a new Alert Notifications by toggling on/off the green button to the right of each of the alert types.
- Users can adjust the threshold to trigger an alert for Low Battery Alert and Speed Alerts
- Users can select how they would like to receive each alert type by clicking the alert in the Alert Via section at the bottom of the page view



## Geofences

Provides you the ability to:

- Users can set up a new Geofence by clicking “Add geofence”
  - Enter a Geofence Name
  - Enter the Location address or select the location on the map view
  - Select which vehicles the geofence should apply to
  - Set your Geofence radius (150 Feet is default)
  - Click Save
  - View or edit your existing Geofences

